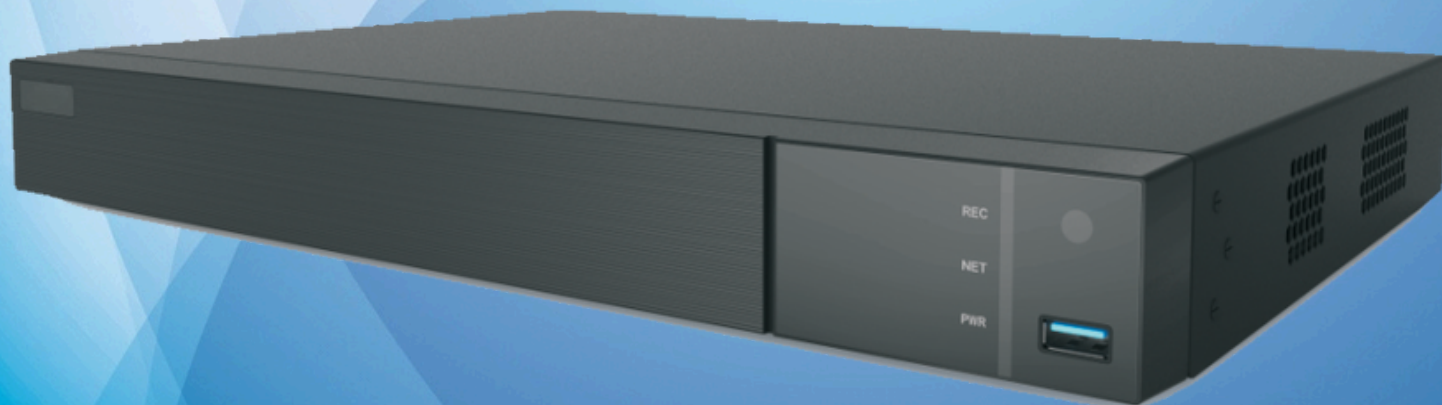


HD
Over Coax



EM-DVR27032TCHC 32CH DVR 5MP Lite Hybrid

DECODERS



EM-DVR27032TCHC series are 16/32 CH 5MP Lite high definition DVRs with ability to connect analog and IP cameras simultaneously, which adopt the standard H.265 high profile compression format and the most advanced SOC technique to ensure real time recording in each channel and realize outstanding robustness of the system.

EM-DVR27032TCHC support 16/32 CH video input, 16/16 CH audio input, simultaneous 16/16 CH playback. The series of product can meet different security requirements of home, financial, commerce, enterprise, transportation and government, etc.

EYEMOTION by Electronic's Time

Indirizzo: via MadonnaPiccola 32 Q-R , 74015 Martina Franca
Provincia: Taranto, ITALIA - P.iva 01893060739

Centralino: +39-080-4802711

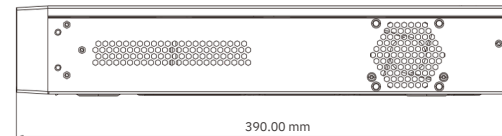
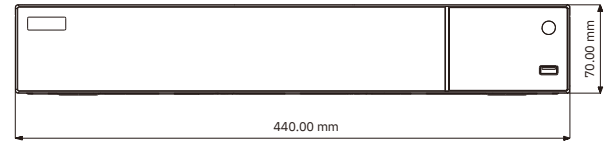
Web site: <http://www.eyemotion.it>

E-mail: info@eyemotion.it

Specifications

Model		TD-2716TC-HC	TD-2732TC-HC
System	Compression	Standard H.265 High Profile	
	OS	Embedded Linux	
Video	Input	BNC × 16	BNC × 32
	Resolution	TVI/AHD : 5MP/4MP/3MP/1080P/720P/WD1 CVI : 4MP/3MP/1080P/720P/WD1	
	IP Input	8CH (Up to 16CH)	8CH (Up to 24CH)
	Output	HDMI × 1 : 1920 × 1080 / 1280 × 1024 / 1024 × 768 VGA × 1 : 1920 × 1080 / 1280 × 1024 / 1024 × 768 BNC × 1 : CVBS (used as the main or spot output)	
Audio	Input	RCA × 16	
	Output	RCA × 1	
	Two-way audio	Take up channel one audio input	
Record	Resolution	5MP Lite/4MP Lite/1080P/1080P Lite/720P/WD1 5MP Lite@10fps	
	Frame Rate	4MP Lite/1080P@12fps/15fps (PAL / NTSC) 1080P Lite/720P/WD1@25fps/30fps (PAL / NTSC)	
	Bit Rate	32Kbps ~ 5Mbps	
	Mode	Manual, timer, motion	
IP Input	Resolution	Up to 5MP@30fps	
Play back	Playback	16 CH	
	Search	Time slice / time / event / tag search	
	Smart Search	Highlight colors to display the camera record in a certain period of time, different colors refer to different record events	
	Function	Play, pause, FF, FB, digital zoom, etc.	
Alarm	Mode	Manual, motion, exception	
	Input	16 CH	
	Output	4 CH	
	Triggering	Record, snap, preset, e-mail, etc.	
Network	Interface	RJ45 1000Mbps × 1	
	Protocol	TCP / IP, PPPoE, DHCP, DNS, DDNS, UPnP, NTP, SMTP	
	Bandwidth	64/96Mbps (access/transfer) / 88/160Mbps (access/transfer)	
Mobile Device	OS	iOS, Andriod	
Storage	HDD	SATA × 4; E-SATA × 1; up to 8TB per HDD	
Backup	Local Backup	U disk, USB removable HDD	
	Network Backup	Yes	
Port	RS485	RS485 × 1, connect to PTZ or keyboard	
	USB	USB 2.0 × 2	
	Remote Controller	Optional	
Others	Power Supply	ATX-250W	
	Consumption	≤ 20W (without HDD)	≤ 30W (without HDD)
	Dimensions (mm)	440 × 390 × 70 (W × D × H)	
	Work Environment	-10 ~ 50 °C , 10% ~ 90% humidity	

Dimensions



Features

- 16/32 CH TVI / AHD video input, support 5MP / 4MP / 3MP / 1080P / 720P / WD1
- 16/32 CH CVI video input, support 4MP / 3MP / 1080P / 720P / WD1
- 16/32 CH DVRs default support 8/8 CH IPC 8MP / 5MP / 4MP / 3MP / 1080P / 960P / 720P
- Adopt standard H.265 high profile compression format to get high-quality video at much lower bit rate
- Intuitive and user-friendly Graphics User Interface (GUI), window style operation by mouse
- Multi-mode recording: manual / timer / motion
- Playback : 16/16 CH simultaneously playback
- Search: time slice, time, event (manual, motion), tag search
- Express and flexible backup via USB, network and so on
- Pentaplex: preview, record, playback, backup and remote access
- DHCP, DDNS, PPPoE network protocol, IE browse and CMS supported
- Remote control via IE or CMS : preview, playback, backup, PTZ and configuration
- Dual stream technology for local storage with high definition, remote network transmission and remote surveillance with mobile device
- Multi-user online simultaneously
- Authorization management, log review and device status review
- 1080P output, true high resolution display
- Support PTZ preset and auto cruise, up to 255 presets and 8 cruises
- Support NAT function and QRCode scanning by mobile phone and PAD
- Powerful smart phone & Pad surveillance with iOS and Andriod OS

Rear Panel

EM-DVR27032TCHC

